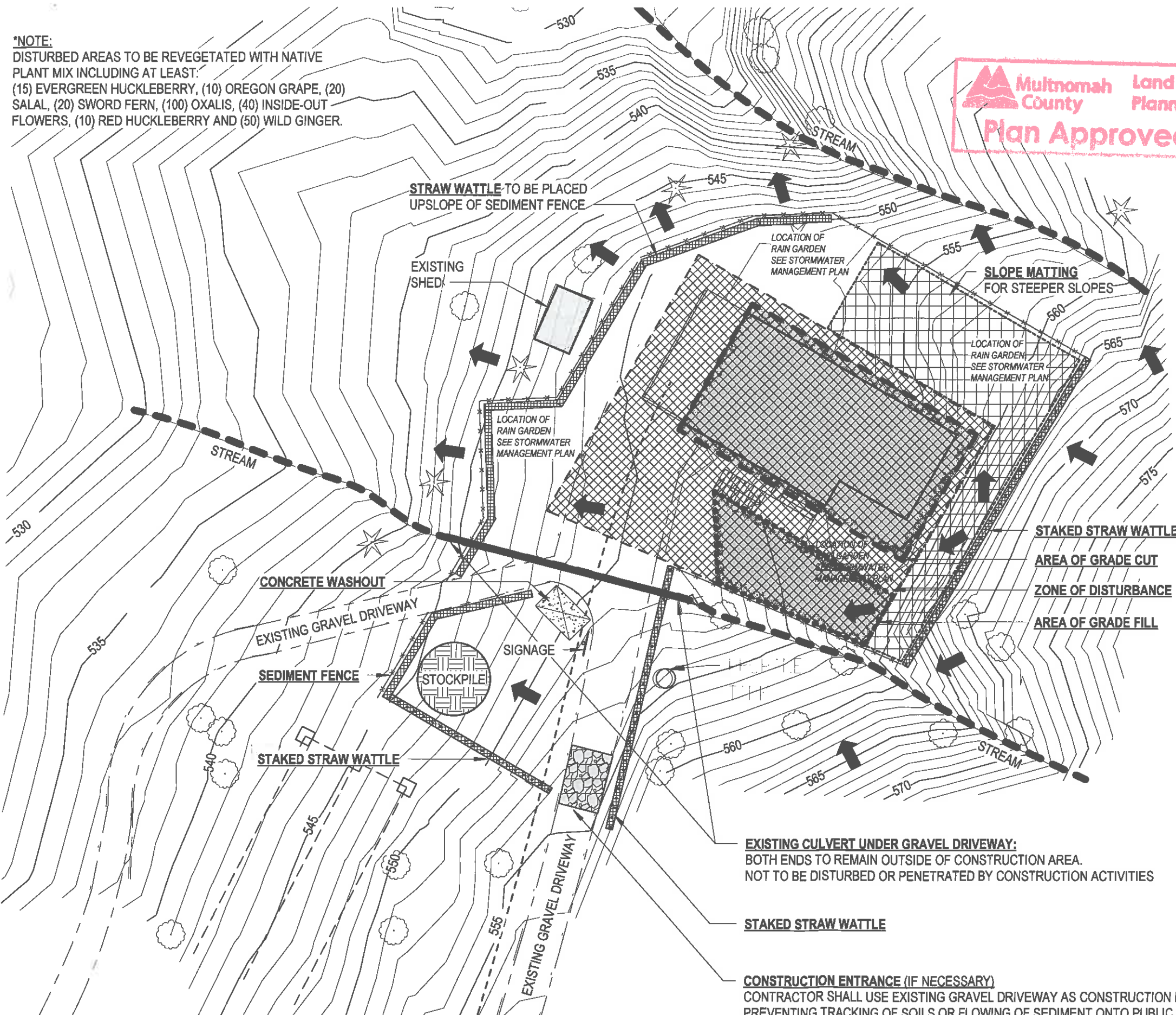


**\*NOTE:**  
 DISTURBED AREAS TO BE REVEGETATED WITH NATIVE  
 PLANT MIX INCLUDING AT LEAST:  
 (15) EVERGREEN HUCKLEBERRY, (10) OREGON GRAPE, (20)  
 SALAL, (20) SWORD FERN, (100) OXALIS, (40) INSIDE-OUT  
 FLOWERS, (10) RED HUCKLEBERRY AND (50) WILD GINGER.



EROSION CONTROL / GRADING LEGEND	
	SEDIMENT FENCE, INSTALL PER DETAIL 4/EC02, [DETAIL 4.3-A PER EROSION SEDIMENT CONTROL MANUAL (ESCM)]
	CONSTRUCTION ENTRANCE *IF NECESSARY (DETAIL 4.2-A PER ESCM)
	CONCRETE WASHOUT SEE DETAIL 2/EC02 FOR INSTALLATION (DETAIL 4.4-A PER ESCM)
	DIRT STOCKPILE PER DETAIL 5/EC02
	SLOPE MATTING
	STRAW WATTLE
	STAKED STRAW WATTLE SEE DETAIL 3/EC02 FOR INSTALLATION (DETAIL 4.3-C PER ESCM)
	DRAINAGE FLOW ARROW
	EROSION CONTROL SIGNAGE PER ESCM
	EXISTING CONTOUR LINE
	NEW CONTOUR LINE

**POLYPHON**  
 ARCHITECTURE & DESIGN, LLC  
 412 NW COUCH ST. | SUITE 309 | PORTLAND, OR 97209  
 polyphon.com

OWNER:  
 BRAMBLY WOOD LLC

PROJECT NAME:  
 BRAMBLY WOOD  
 37925 E KNIERIEM RD.  
 CORBETT, OR 97019

ISSUE DATES:

JOB #: 1821  
 STATUS: SD

**EROSION CONTROL PLAN**

**EC01**

ORIGINAL SHEET SIZE: 11" x 17"

**EC01 1 EROSION CONTROL PLAN**

SCALE: 3/64" = 1'-0"

**EXISTING CULVERT UNDER GRAVEL DRIVEWAY:**  
 BOTH ENDS TO REMAIN OUTSIDE OF CONSTRUCTION AREA.  
 NOT TO BE DISTURBED OR PENETRATED BY CONSTRUCTION ACTIVITIES

**STAKED STRAW WATTLE**

**CONSTRUCTION ENTRANCE (IF NECESSARY)**  
 CONTRACTOR SHALL USE EXISTING GRAVEL DRIVEWAY AS CONSTRUCTION ENTRANCE, SO LONG AS IT IS EFFECTIVE AT PREVENTING TRACKING OF SOILS OR FLOWING OF SEDIMENT ONTO PUBLIC RIGHT-OF-WAYS OR ADJACENT PROPERTIES. IF IT CEASES TO PERFORM AS DESCRIBED ABOVE, CONTRACTOR SHALL INSTALL AN 8 OUNCE NON-WOVEN GEOTEXTILE WITH 4"- 6" CLEAN ANGULAR ROCK ON TOP AND CLEAN OUT AS NECESSARY FOR THE DURATION OF CONSTRUCTION.